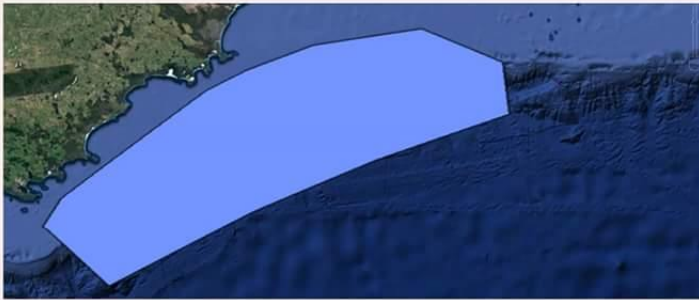




Here's what's been proposed as being worthy of protection from mining



Here's what SHOULD be protected from mining

Degrees	Latitude (South)			Longitude (East)		
	Minutes	Seconds	Degrees	Minutes	Seconds	
35	16	16	118	00	00	
35	06	38	118	09	25	
34	33	44	119	20	49	
34	28	06	119	39	47	
34	21	15	120	10	58	
34	19	37	121	00	20	
34	34	35	121	35	45	
34	54	00	121	36	08	
35	06	19	120	33	28	
35	20	05	119	36	14	
35	40	54	118	26	37	

These coordinates bound two oil and gas prospects and are legitimate points of reference



Here's what needs to be protected compared to what has been released to mining exploration