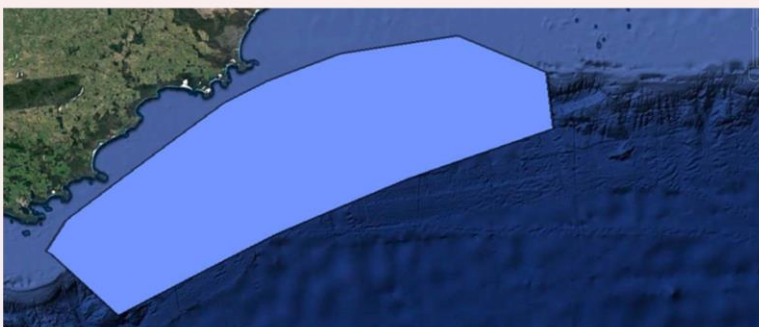


We have a very unique marine environment which should be protected to any mining exploration. For ever.....



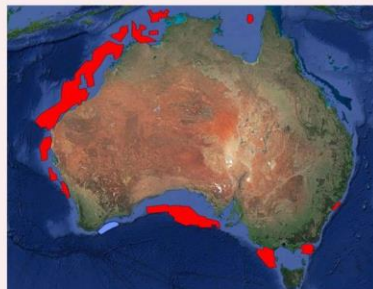
Heres whats been proposed as being worthy of protection from mining



Heres what SHOULD be protected from mining

Latitude (South)			Longitude (East)		
Degrees	Minutes	Seconds	Degrees	Minutes	Seconds
35	16	16	118	00	00
35	06	38	118	09	25
34	33	44	119	20	49
34	28	06	119	39	47
34	21	15	120	10	58
34	19	37	121	00	20
34	34	35	121	35	45
34	54	00	121	36	08
35	06	19	120	33	28
35	20	05	119	36	14
35	40	54	118	26	37

These coordinates bound two oil and gas prospects and are legitimate points of reference



Heres what needs to be protected compared to what has been released to mining exploration

Sent from my iPad